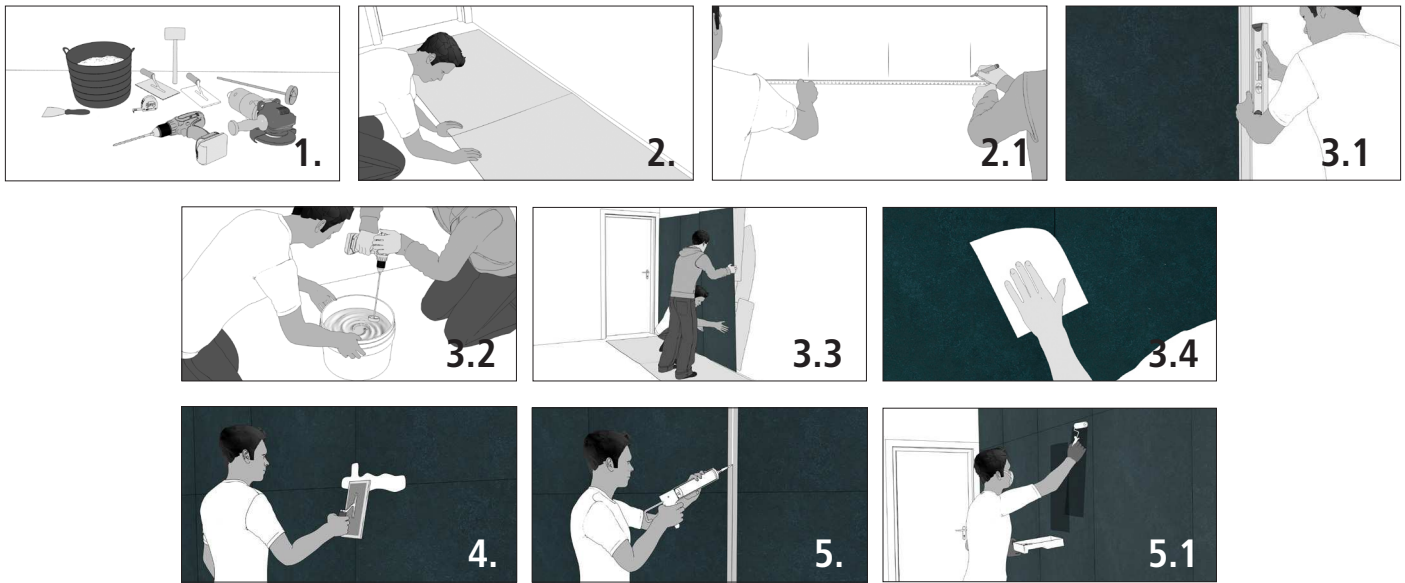


INSTALLATION GUIDE

Airslate



The "AIRSLATE" sheet is made from 2-4 mm thick natural slate with a resin (polyester) and fiberglass back layer, which provides high resistance, flexibility, and dimensional stability. It is a very versatile, lightweight, flexible product, and because it is so easy to install, it is ideal for refurbishments, as it prevents a large generation of debris, as well as for covering large areas. Due to its characteristics and stability, it is a product that holds very well, without deforming or cracking in both high and low temperatures. In addition, due to its typology it has a good bending radius without breaking, making it suitable for installing in curved places.

INFORMATION TO TAKE INTO ACCOUNT BEFORE YOU BEGIN THE INSTALLATION

IT IS EXTREMELY IMPORTANT that you correctly read and understand the information given in these instructions before starting with the installation, as an incorrect installation, use, or maintenance of the installation may result in the cancellation of the manufacturer's warranty. The points listed below are part of the installer/owner's liability:

Carefully inspect ALL material prior to installation, to verify that it has no defects. Materials installed with visible defects are not covered by the warranty.

Exposure to direct sunlight or contact with water can produce tone changes over time, and slate, because the slate may contain oxide traces, it may present oxidation points on its surface when in contact with water. This is something inherent to slate and is NOT a defect.

- If you are not satisfied with the material prior to installing, please contact your dealer. DO NOT INSTALL IT.

- We recommend that, as a final inspection, you examine the color, finish, style, and quality, BEFORE installing. Verify that the material is right. We will not be liable for any expenses incurred once the pieces with visible defects are installed.

- It is the installer's and the owner's responsibility to ensure that work conditions and the work area are suitable, before installing the material.

The installation surface shall meet the suitable characteristics for laying on a thin layer: clean surface, dry, rough texture with no ledges or loose parts, and above all flat (slope of 2 mm with 2 m ruler.)

- Check that the weather conditions are suitable for installing the materials.

The technical data sheet of the product, which can be checked on the website www.anticcolonial.com, cannot reflect all the applications and conditions involved in the use of a material, so in case of situations not described in the data sheet, it is recommended to consult our technical department.

Materials with different shades/production batches cannot be mixed, unless expressly approved by L'Antic Colonial. Check that all the material comes from the same collection and is made in the same batch.

INSTALLATION

1.- The installation of AIRSLATE requires qualified personnel, with proven experience and suitable tools: notched trowels, rubber roller and trowel, spirit level, sponges, buckets for grouting, and machinery for mixing and cutting the AIRSLATE.

2.- Before installing, protect the floor with cardboard or plastic to avoid stains.

2.1.- Next, knowing the sheet format, we shall mark the width and

height measurements on the wall, to assist with its installation later. Carry out the construction layout, depending both on the wall tile design and the use demands. Determine type and color of placement joints, cuts, and perimeter joints.

3.- For installing the sheet, we recommend using masking tape placed on the end of the sheet to prevent the adhesive from depositing on the surface during installation, and to easily remove excess adhesive from the joints between sheets.

3.1.- Check that the base or placement substrate is perfectly vertical, stable, non-deformable, and with no risk of water leaks and moisture in general. Initially place the sheet on the substrate and check that it is perfectly level.

3.2.- For installing AIRSLATE, we only recommend R2T reactive-resin adhesives as per EN 12004, such as BUTECH'S POLITECH PREMIUM. Follow manufacturer recommendations in the preparation and use of adhesives. Do not apply adhesive with a final thickness greater than that indicated on the container.

Install the wall covering with the thin-layer method with adhesive and notched trowel no bigger than 8 x 8 mm, and use the double bonding method, which consists of applying the adhesive with the notched trowel on the substrate and applying an adhesive layer on the back of the piece with the smooth part of the trowel. Check that when you press the Airslate sheet on the adhesive, it does not overflow through the joint.

3.3.- Control the adhesive wettability, pressing the Airslate sheet on the bonding material, and check that the latter makes full contact with the back of the sheets. Once the adhesive is applied, lay the sheet with the hand and then use a trowel to extract the air from under the sheets.

3.4.- Once the sheet is installed, it is very important to remove the excess adhesive immediately so prevent it from leaving residue on the surface. Clean thoroughly with a damp cloth or paper and let dry.

4.- INSTALLATION JOINTS:

- For installing outdoors:

Installation joints shall be 1 mm at least. We recommend covering the top of the facade with a trim that prevents the penetration of water.

Use CG2WA-type cement-based joint materials, such as BUTECH'S COLORSTUK RAPID N. We recommend using quick-setting and water-resistant joint mortars.

Apply the joint material with a rubber trowel, avoiding the formation of cracks or gaps, and clean before the contact of the joint mortar with the Airslate sheets may damage the wall covering or cause moisture stains. To seal the joints, we recommend protecting the sides of the joints with masking tape to avoid staining the material with the product being used to seal the joint.

- For installing indoors:

Leaving joints is not necessary for its installation, they can be installed with butt joints.

If you decide to leave a joint, we recommend using CG2WA cement-based joints such as Butech's colorstuk rapid n.

5.- MOVEMENT JOINTS

Observe the structural joints present in the substrate.

There will be perimeter joints in corners, wall covering changes in plane, and changes in material.

The intermediate movement joints shall configure panels as regular and square as possible. Place a horizontal movement joint at the bottom line of the floor slab of each floor. Do not carry out vertical movement joints separated more than 7 m. with a minimum width of 8 mm.

- Outdoors: Use elastic putties such as BUTECH'S p-404.

- Indoors: Use elastic silicone putties such as BUTECH'S s-107 N or p-404.

Protect the facade support from adverse weather conditions and other construction works that might damage it.

Efflorescence arises naturally from any mortar containing Portland cement. If efflorescence appears, clean with a brush and a suitable detergent.

5.1.- The material is supplied protected, and it is therefore not necessary to apply any water-repellent after its installation. If you want to apply protector again, we recommend the use of a neutral protector such as FILA FOB. After applying the protective liquid, remove excess with a cloth or paper to make the application uniform.

6.- CUTTING AND MACHINING.

Prepare a flat and clean space for making cuts.

Dry drill Airslate pieces with drill bits of up to 8 mm in diameter. For larger apertures, use drill bits for dry cutting porcelain.

Machine the pieces on the back with radial dry cutting machines and cutting disc for multiple materials.

Once the cuts are made, polish the edges with an abrasive block.

WARRANTY

You can check the warranty conditions of the product on the website www.anticcolonial.com, in the catalog, or by contacting your distributor.